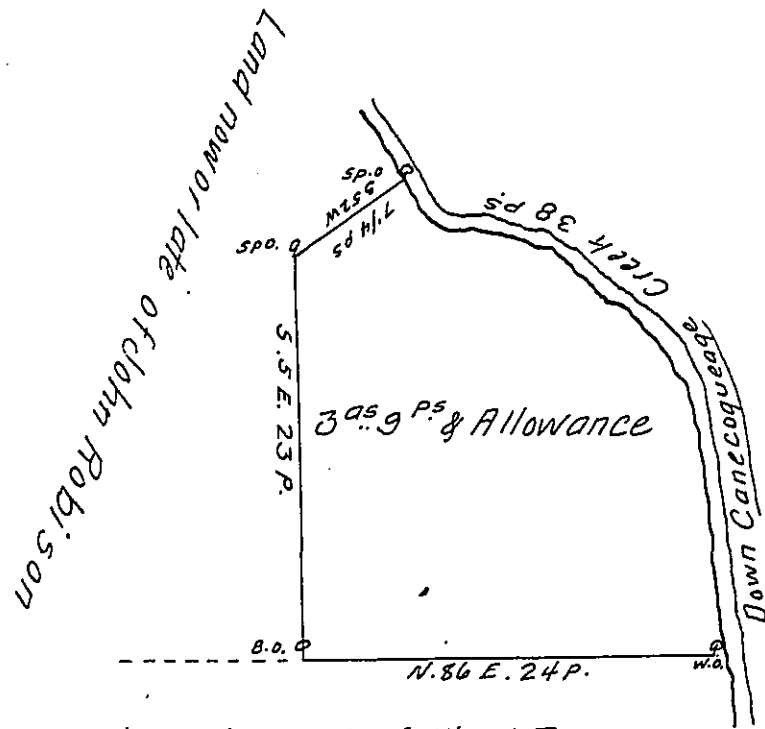


Courses on the Creek

N. 11° W. 14 P^s
 N. 36 W. 10
 N. 83 W. 11 1/2
 N. 3. W. 2 1/2
 38 P.



Land formerly of Albert Torrence
 now said to be Gabriel Gordon's

A Draft of a Piece of Land situate formerly in Letterkenny Township in the County of Cumberland, but now in Green Township in the County of Franklin. Containing three Acres and nine Perches and an Allowance proportional to Six & Cent for Roads &c. being Part of a Tract formerly surveyed in pursuance of a Warrant granted to William Smith bearing Date the 12th Day of August 1765. Re-surveyed and laid off the 31st Day of May 1792.

To Daniel Brodhead Esq^r
 Surveyor General

p. Matt^w Henderson D.S.

IN TESTIMONY that the above is a copy of the original remaining on file in the Department of Internal Affairs of Pennsylvania, made conformably to an Act of Assembly approved the 16th day of February, 1833, I have hereunto set my Hand and caused the Seal of said Department to be affixed at Harrisburg, this fourteenth day of February 1907.

Asaac D. Brown
 Secretary of Internal Affairs.